

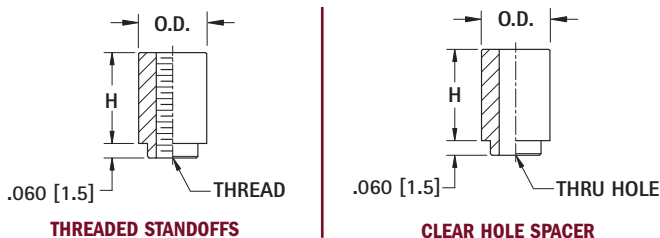
SURFACE MOUNT STANDOFFS & SPACERS



MATERIAL: Steel, Tin Plate
PACKAGING: Supplied on 13 inch reels with Kapton tape added to top surface of standoff for vacuum pickup

SUPPLIED ON TAPE AND REEL

SMT Standoffs & Spacers are supplied on tape and reel with Kapton tape added to the top surface. This allows for the standoff to be placed on the circuit board using standard vacuum pick and place equipment. Attachment of the standoff to the PCB is completely controlled. Costly scrapping of populated board due to improper installation of swage or broaching spacer is eliminated.

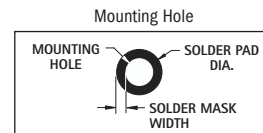


THREADED STANDOFFS

CLEAR HOLE SPACER

Metric Standoffs				
CAT. NO.	H HEIGHT	PARTS/ REEL	THREAD	OUTSIDE DIA. (O.D.)
24881	2.00 (.080)	1500	M3	5.56 (.219)
24882	3.00 (.118)	1000		
24883	4.00 (.157)	900		
24884	6.00 (.236)	650		
24885	8.00 (.315)	375		
24886	10.00 (.394)	300		

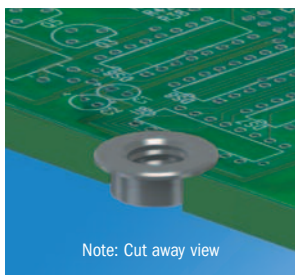
THREADED STANDOFFS	CLEAR HOLE SPACERS	SMT STANDOFFS & SPACERS			
CAT. NO.	CAT. NO.	H HEIGHT	PARTS/ REEL*	THREAD	OUTSIDE DIA. (O.D.)
4871	—	.062 (1.57)	1500	2-56	.219 (5.6)
4873	—	.250 (6.35)	650		
4881	4886	.062 (1.57)	1500	4-40	.219 (5.6)
4882	4887	.125 (3.18)	1000		
4883	4888	.250 (6.35)	650		
4884	4889	.375 (9.52)	300		
4891	4896	.062 (1.57)	1500	6-32	.281 (7.1)
4892	4897	.125 (3.18)	1000		
4893	4898	.250 (6.35)	650		
4894	4899	.375 (9.53)	300		



THREAD	MOUNTING HOLE	SOLDER PAD DIA.	SOLDER MASK WIDTH
2-56	.147 (3.7)	.244 (6.2)	.049 (1.2)
4-40	.166 (4.2)	.244 (6.2)	.039 (1.0)
6-32	.213 (5.41)	.306 (7.8)	.047 (1.2)
M3	.166 (4.2)	.244 (6.2)	.039 (1.0)

STANDOFFS

SURFACE MOUNT THREADED INSERTS

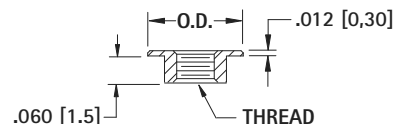
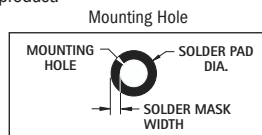


Note: Cut away view

MATERIAL: Steel, Tin Plate
PACKAGING: Supplied on 13 inch reels with Kapton tape added to top surface of standoff for vacuum pick-up

SUPPLIED ON TAPE AND REEL

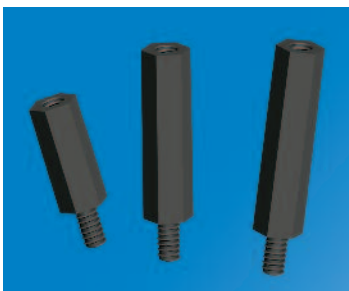
Zero height threaded inserts sit just .012 (0.30) above the board for an easy method of adding threads to PCB. Can be installed using same equipment and processes as any SMT product.



THREAD	MOUNTING HOLE	SOLDER PAD DIA.	SOLDER MASK WIDTH
2-56	.147 (3.7)	.244 (6.2)	.049 (1.2)
4-40	.166 (4.2)	.244 (6.2)	.039 (1.0)
6-32	.213 (5.41)	.306 (7.8)	.047 (1.2)

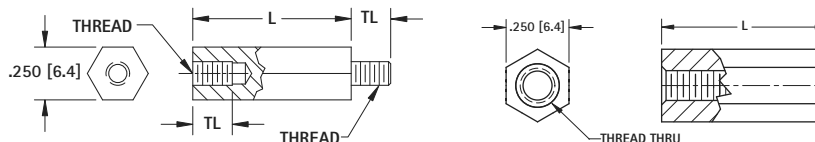
Zero Height SMT Threaded Inserts				
CAT. NO.	THREAD	OUTSIDE DIA. (O.D.)	H HEIGHT	PARTS/ REEL
4929	2-56	.219 (5.6)	.012 (.30)	1500
2439	4-40	.219 (5.6)		
4949	6-32	.281 (7.1)		

EXTREME TEMPERATURE NYLON STANDOFFS



Keystone's high performance nylon standoffs will stand up to harsh conditions such as automotive under hood applications. The standoffs are manufactured with a material that was specifically designed to survive the most extreme conditions. The plastic is designed to stay pliable and maintain its tensile strength in extreme cold and heat.

MATERIAL: High Performance Nylon Blend. Black
Operating Temperature: -20°F (-29°C) thru 365°F (185°C)



THREAD	TL
4-40	.187 (4.7)
6-32	.250 (6.4)
8-32	.375 (9.5)

HIGH PERFORMANCE MALE/FEMALE			
L LENGTH	4-40 CAT. NO.	6-32 CAT. NO.	8-32 CAT. NO.
.250 (6.4)†	4940	4970	4980
.375 (9.5)	4941	4971	4981
.500 (12.7)	4942	4972	4982
.750 (19.1)	4944	4974	4984
1.000 (25.4)	4946	4976	4986

HIGH PERFORMANCE FEMALE/FEMALE			
L LENGTH	4-40 CAT. NO.	6-32 CAT. NO.	8-32 CAT. NO.
.250 (6.4)	4842	4874	4932
.375 (9.5)	4843	4875	4933
.500 (12.7)	4844	4876	4934
.750 (19.1)	4846	4878	4936
1.000 (25.4)	4848	4880	4938

† .140 (3.56) Internal Thread Depth