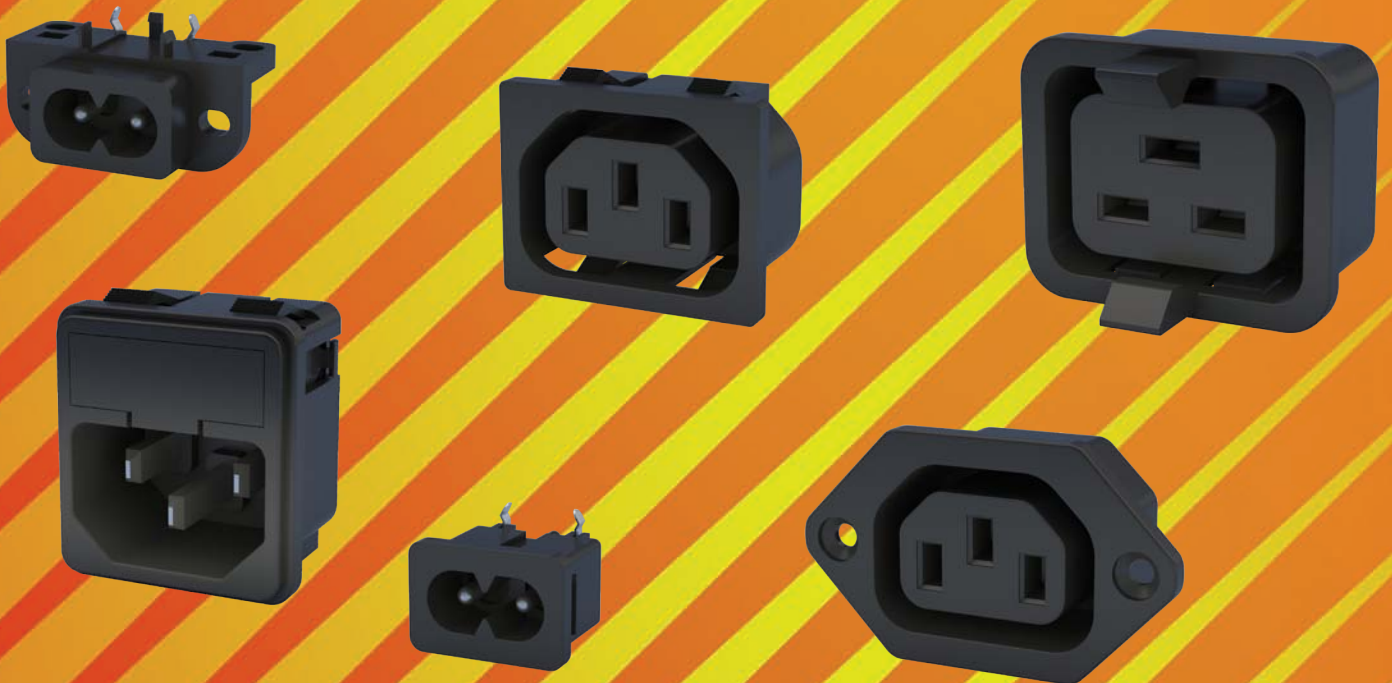


# ADAM TECH INTERCONNECTS



## **POWER CONNECTORS**

**IEC-60320, NEMA & more**



# FEATURES & BENEFITS

## Introduction

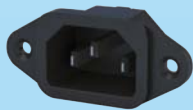
Adam Tech IEC & Mini IEC Series AC Inlets and Outlets are primary power receptacles designed, manufactured, tested and approved to UL, CSA and other applicable international specifications including IEC-60320 and CEE-22. Adam Tech offers a wide variety of body styles, shapes and orientations to accommodate most class I & II applications with two or three blade contacts in both IEC and Mini-IEC configurations. Mounting choices include screw holes and snap-in versions and four termination styles.

Options of ganged ports or receptacle with integral fuse holder are also available.

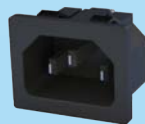
## Features and Benefits:

- IEC & Mini-IEC types
- IEC-60320, CEE-22 Compliant
- UL and CSA approved
- Multitude of Body Styles
- Choice of terminations
- Option of Integral Fuse Holder

## IEC Styles



IEC Inlet,  
Screw On Panel Mount



IEC Inlet,  
Snap In Panel Mount



Mini IEC,  
Screw On Panel Mount



Female IEC Outlet,  
Snap In Panel Mount



Male Inlet,  
Fused with Snap In Panel Mount



Mini IEC,  
Panel Snap



Female IEC Outlet,  
Screw On Panel Mount

## NEMA Styles



NEMA-5-1-A  
Dedicated Panel Snap,  
Solder Hook Style



NEMA-5-2  
Dedicated Panel Snap  
IDC Style



NEMA-5-3  
Universal Panel Snap  
IDC Style

# AC INLETS & OUTLETS

## IEC 320 & MINI IEC CONNECTORS

IEC SERIES



### ORDERING INFORMATION

**IEC**

**SERIES INDICATOR**  
IEC = International inlet/outlet

**A**

**BODY STYLE**

- A = Male Inlet, Screw-on panel mount
- B = Female Outlet, Screw-on panel mount
- C = Male Inlet, Snap-in panel mount
- D = Female Outlet, Snap-in panel mount
- E = Male Inlet, Right Angle PC board mount with mounting flange (Specify EW, EX, EY or EZ)
- F = Male Inlet, Screw on panel mount with 5 x 20mm fuse holder
- G = Male Inlet, Snap-in panel mount with 5 x 20mm fuse holder
- HS = Inlet/Outlet, snap-in panel mount
- HR = Inlet/outlet, snap-in panel mount, right angle PCB mount
- J = Male inlet, right angle PCB & tail with snap-in panel mounting
- NA = Mini-IEC right angle, snap-in
- NB = Mini-IEC right angle, slide-in
- NB-A = Mini-IEC right angle, slide-in with pegs
- NC = Mini-IEC right angle, with flush flange
- NC-A = Mini-IEC right angle, with extended face
- ND = Mini-IEC right angle, with enclosed body
- NF = Mini-IEC right angle, polarized with flange
- NH = Mini-IEC right angle, with ground pin
- NH-A = Mini-IEC right angle, flange mount with ground pin
- GS = Fused inlet with switch snap in panel mount
- FS = Fused inlet with switch screw on panel mount
- M = Female outlet, 20 AMP, Flanged
- N = Male inlet, 20 AMP, Snap-In

**1**

**TERMINALS**

- 1 = .187" Quick-connect terminals
- 2 = .250" Quick-connect terminals
- 3 = Solder terminals .157" [4.0mm]
- 4 = Right Angle PCB mount
- 5 = Solder Terminals .098" [2.5mm]

**PANEL THICKNESS**

- (for body styles C, D & J only)
- Blank** = Universal Snap Panel
  - 080** = 0.8mm Panel
  - 120** = 1.2mm Panel
  - 150** = 1.5mm Panel
  - 200** = 2.0mm Panel
  - 300** = 3.0mm Panel

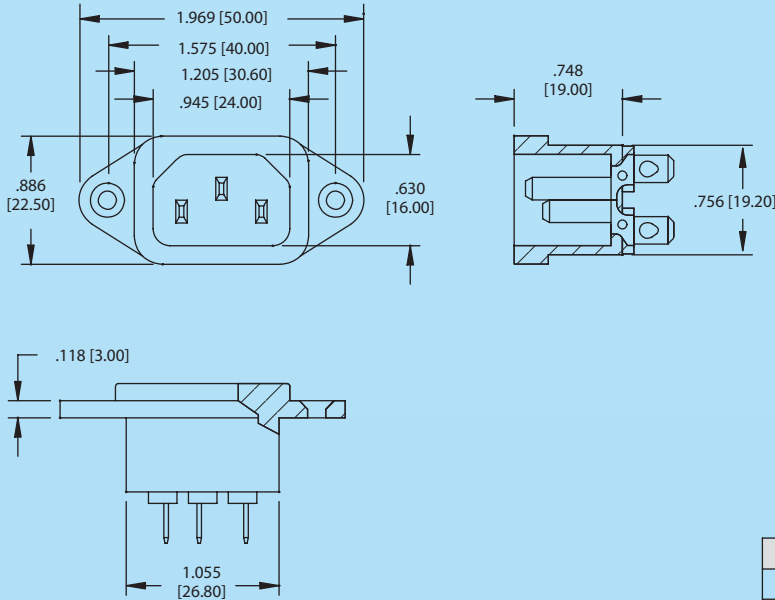
**OPTIONS:**

**K** = Keyed for 120° C (Body Styles A, C, E & J)

# AC INLETS & OUTLETS

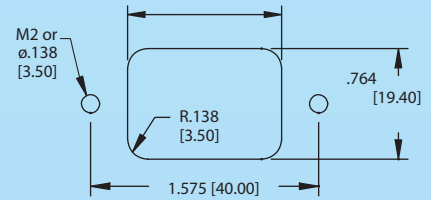
## IEC 320 CONNECTORS IEC SERIES

### IEC-A SCREW ON PANEL MOUNT



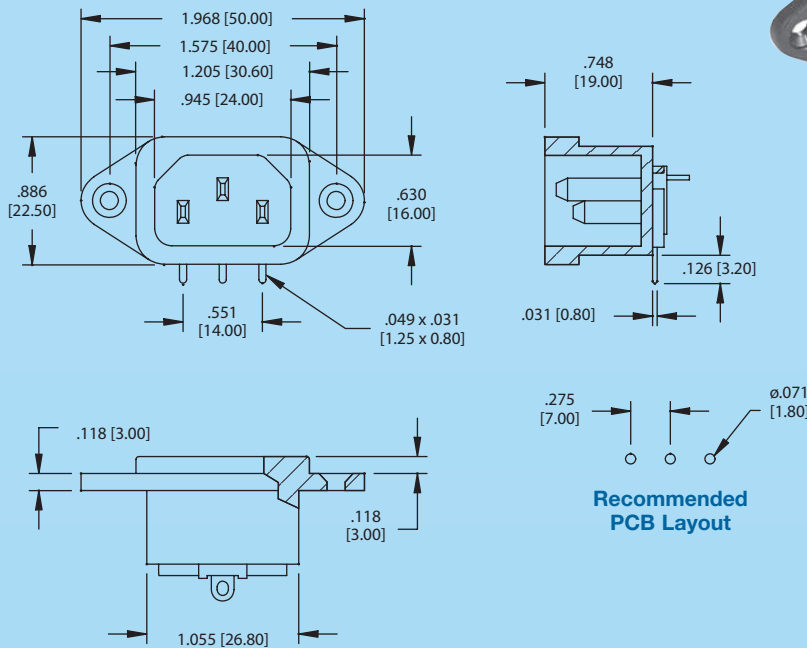
**IEC-A-1**

1.075 [27.30] Front Mounting  
1.212 [30.80] Rear Mounting

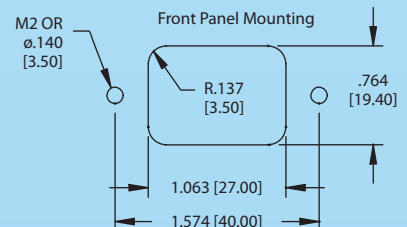
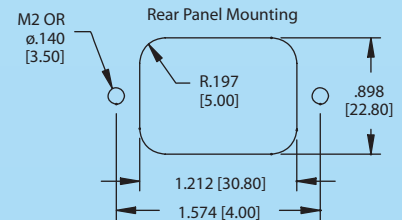


TERMINAL OPTIONS			
1	2	3	5
.187 Q.C.	.250 Q.C.	.157 Solder	.098 Solder

### IEC-A SCREW ON PANEL RIGHT ANGLE PCB MOUNT



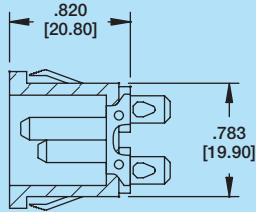
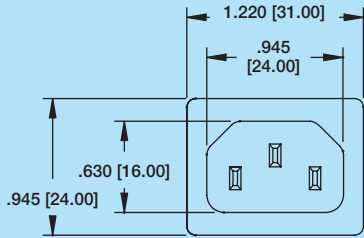
**IEC-A-4**



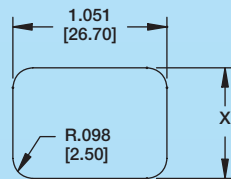
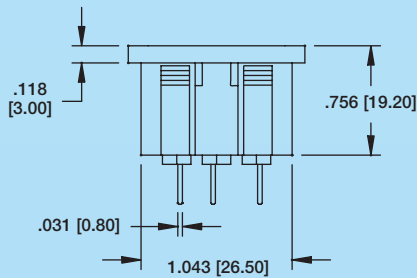
# AC INLETS & OUTLETS

## IEC 320 CONNECTORS IEC SERIES

### IEC-C UNIVERSAL PANEL SNAP



IEC-C-1

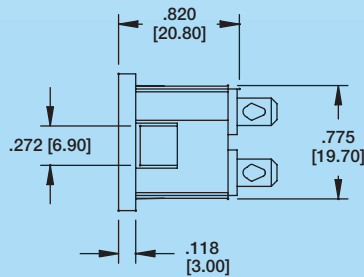
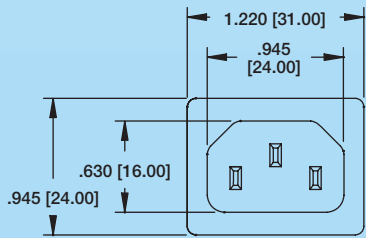


Recommended Panel  
Thickness: 0.8mm - 3.0mm

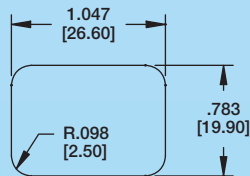
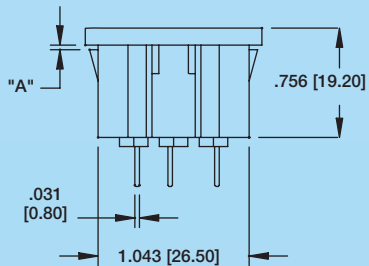
PANEL THICKNESS	DIM X
.031-.039 [0.8-1.0]	.780 [19.8]
.039-.059 [1.0-1.5]	.784 [19.9]
.079-.119 [2.0-3.0]	.788 [20.0]

TERMINAL OPTIONS			
1	2	3	5
.187 Q.C.	.250 Q.C.	.157 Solder	.098 Solder

### IEC-C DEDICATED PANEL SNAP



IEC-C-1-150



Recommended  
Panel Cut-Out

PANEL THICKNESS	PART NUMBER	DIM "A"
0.8mm	IEC-C-X-080	.031 [0.80]
1.5mm	IEC-C-X-150	.059 [1.50]
3.0mm	IEC-C-X-300	.118 [3.00]
4.0mm	IEC-C-X-400	.157 [4.00]

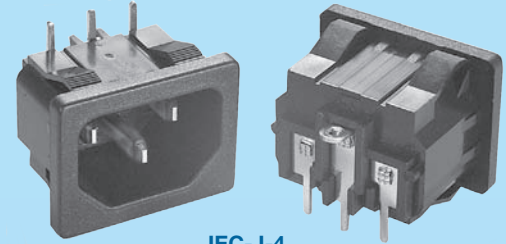
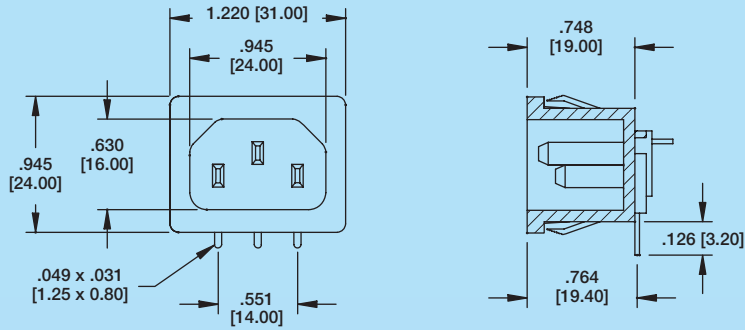
Replace X with terminal option below

TERMINAL OPTIONS			
1	2	3	5
.187 Q.C.	.250 Q.C.	.157 Solder	.098 Solder

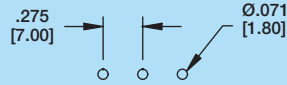
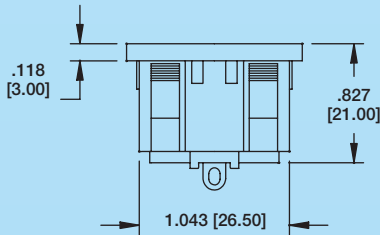
# AC INLETS & OUTLETS

## IEC 320 CONNECTORS IEC SERIES

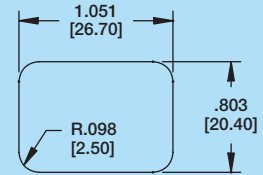
### IEC-J UNIVERSAL PANEL SNAP RIGHT ANGLE PCB MOUNT



IEC-J-4

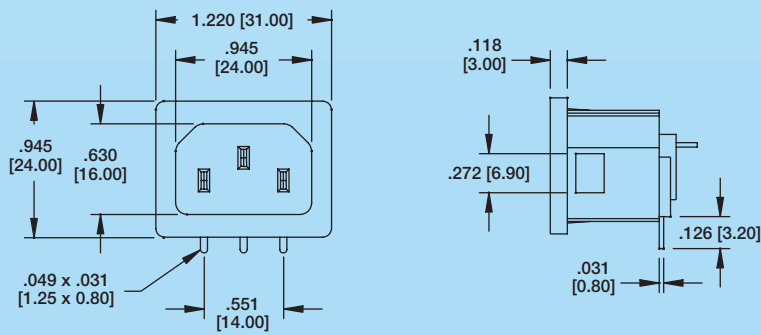


Recommended PCB  
Layout

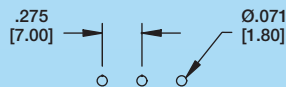
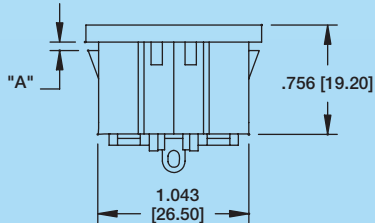


Recommended Panel  
Thickness: 0.80 - 3.0mm

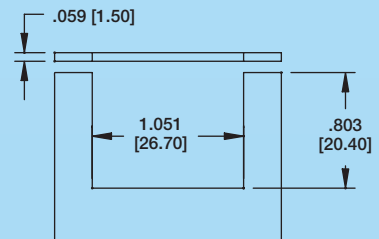
### IEC-J DEDICATED PANEL SNAP RIGHT ANGLE PCB MOUNT



IEC-J-4-150



Recommended PCB  
Layout



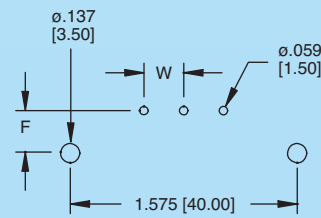
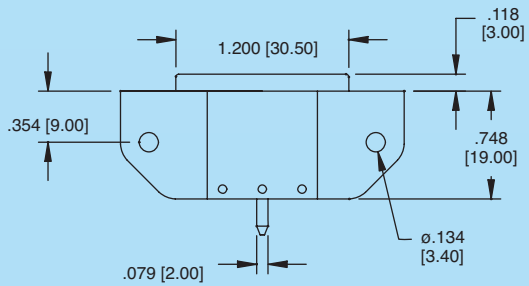
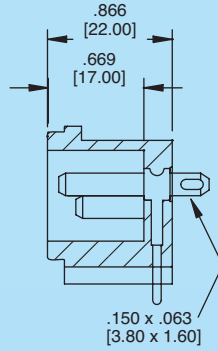
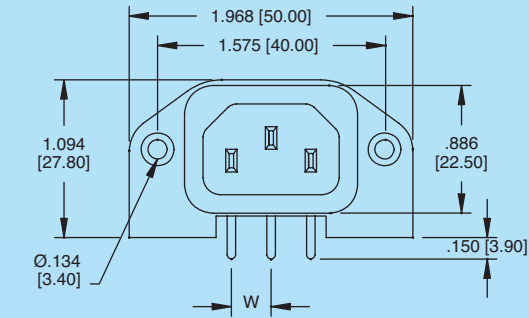
Recommended Panel Cut-Out

PANEL THICKNESS	PART NUMBER	DIM "A"
0.8mm	IEC-J-4-120	.047 [1.20]
1.5mm	IEC-J-4-150	.059 [1.50]
3.0mm	IEC-J-4-200	.079 [2.00]
4.0mm	IEC-J-4-300	.118 [3.00]

# AC INLETS & OUTLETS

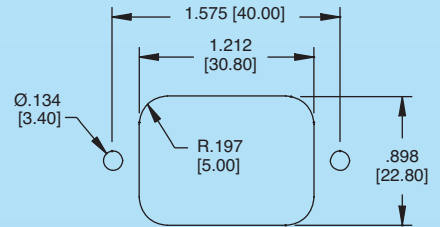
## IEC 320 CONNECTORS IEC SERIES

### IEC-E FLANGED RIGHT ANGLE PCB MOUNT



Recommended PCB Layout

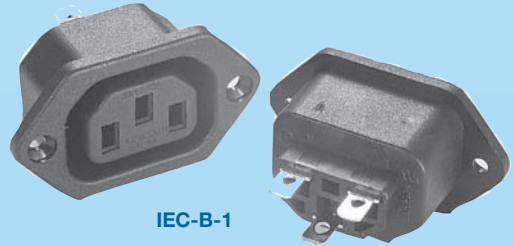
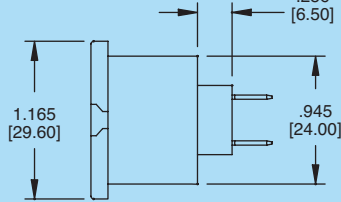
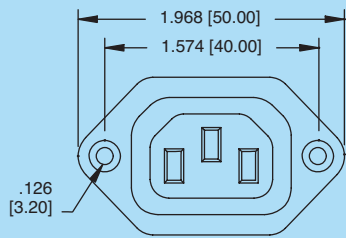
### IEC-EW-4



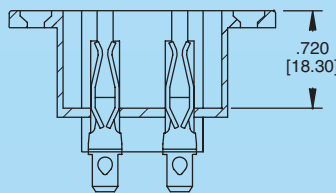
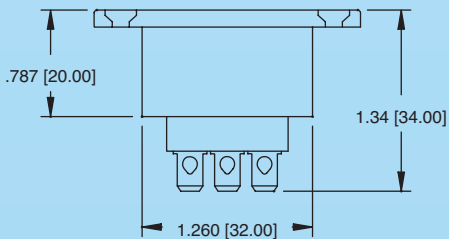
Recommended Panel Cut-Out

DIMENSIONAL		
PART NO.	F	W
IEC-EW	.287 [7.30]	.276 [7.00]
IEC-EX	.287 [7.30]	.358 [9.10]
IEC-EY	.382 [9.70]	.276 [7.00]
IEC-EZ	.382 [9.70]	.358 [9.10]

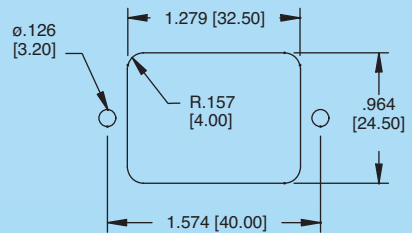
### IEC-B FLANGED SCREW ON PANEL MOUNT



### IEC-B-1



Cross Section



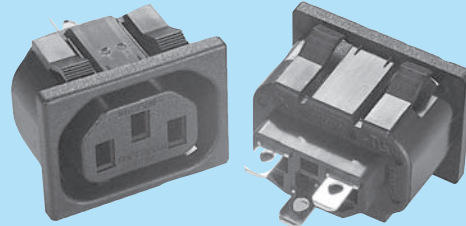
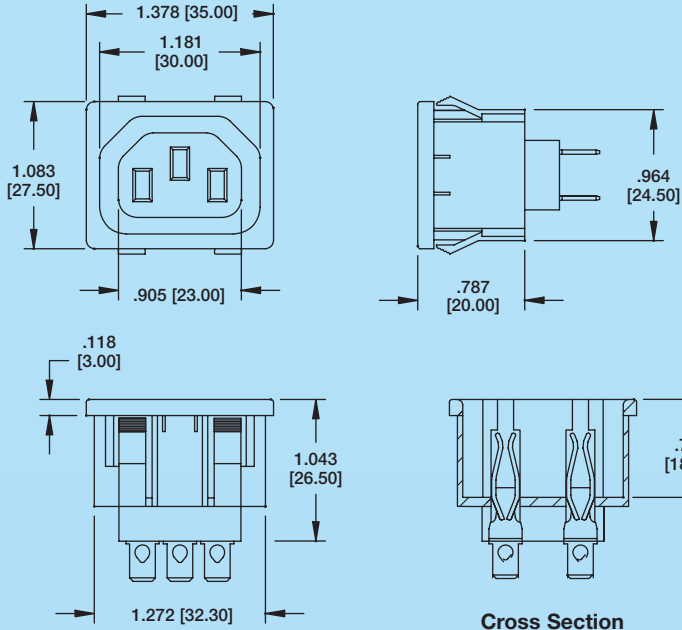
Recommended Panel Cut-Out

TERMINAL OPTIONS		
1	2	3
.187 Q.C.	.250 Q.C.	.157 Solder

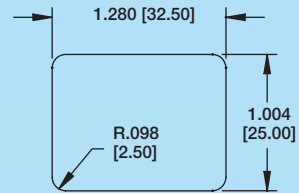
# AC INLETS & OUTLETS

## IEC 320 CONNECTORS IEC SERIES

### IEC-D UNIVERSAL PANEL SNAP

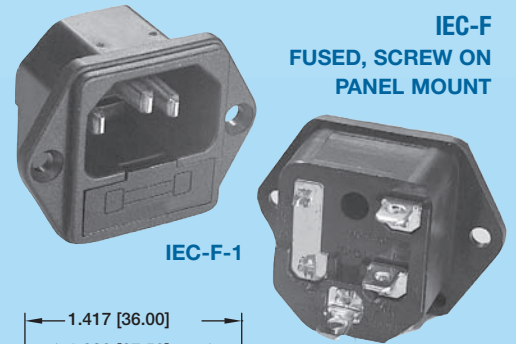
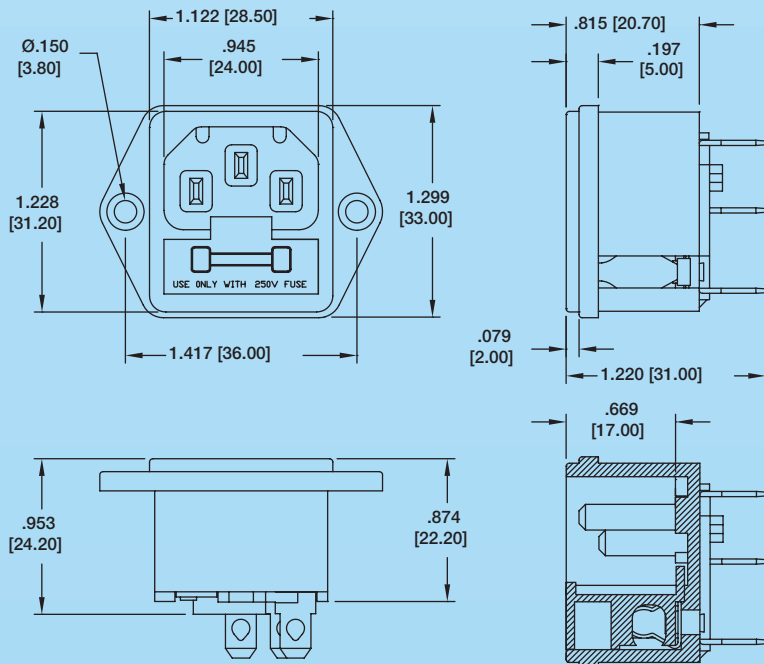


IEC-D-1



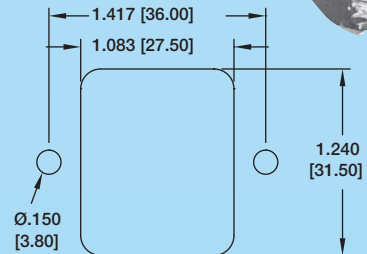
Recommended Panel Thickness:  
0.8mm - 3.0mm

TERMINAL OPTIONS		
1	2	3
.187 Q.C.	.250 Q.C.	.157 Solder



### IEC-F FUUSED, SCREW ON PANEL MOUNT

IEC-F-1



Recommended Panel Cut-Out

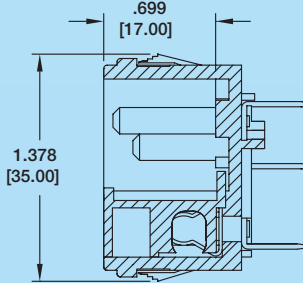
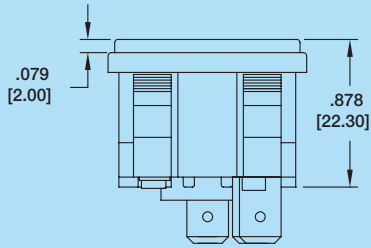
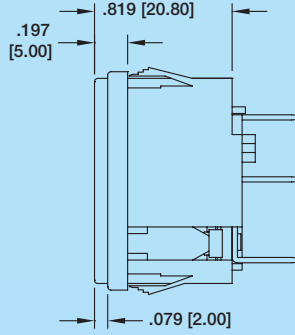
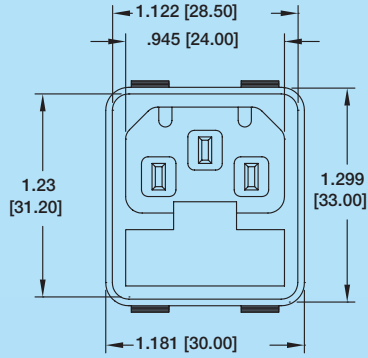
TERMINAL OPTIONS	
1	2
.187 Q.C.	.250 Q.C.

Cross Section



# AC INLETS & OUTLETS

## IEC 320 CONNECTORS IEC SERIES



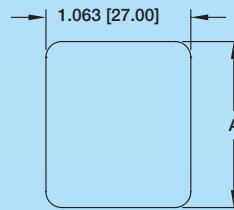
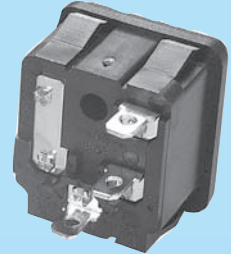
Cross Section

PANEL THICKNESS	DIM X
.031-.071 [0.8-1.8]	1.240 [31.50]
.075-.126 [1.9-3.2]	1.248 [31.70]



IEC-G-1

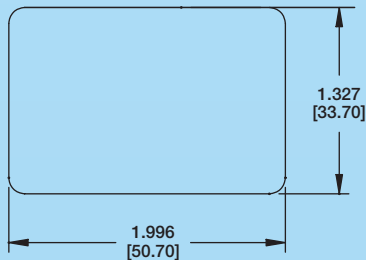
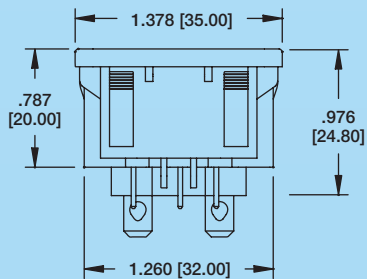
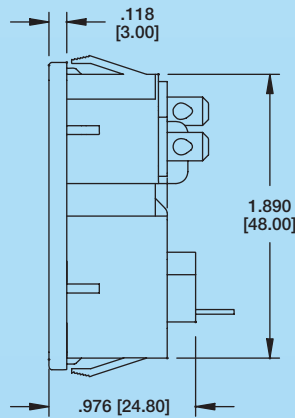
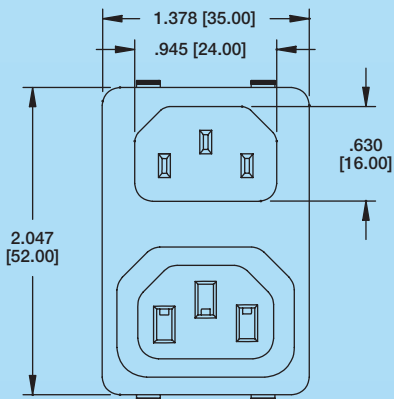
**IEC-G**  
FUSED WITH UNIVERSAL  
PANEL SNAP



PANEL THICKNESS	DIMENSIONS	
	A	
.031-.071 [0.80-1.80]	1.240 [31.50]	
.075-.126 [1.90-3.20]	1.248 [31.70]	

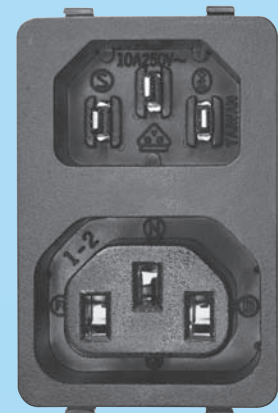
Recommended Panel Cut-Out

TERMINAL OPTIONS		
1	2	5
.187 Q.C.	.250 Q.C.	.157 Solder



Recommended Panel Cut-Out

**IEC-HS**  
FUSED INLET & OUTLET  
WITH UNIVERSAL  
PANEL SNAP

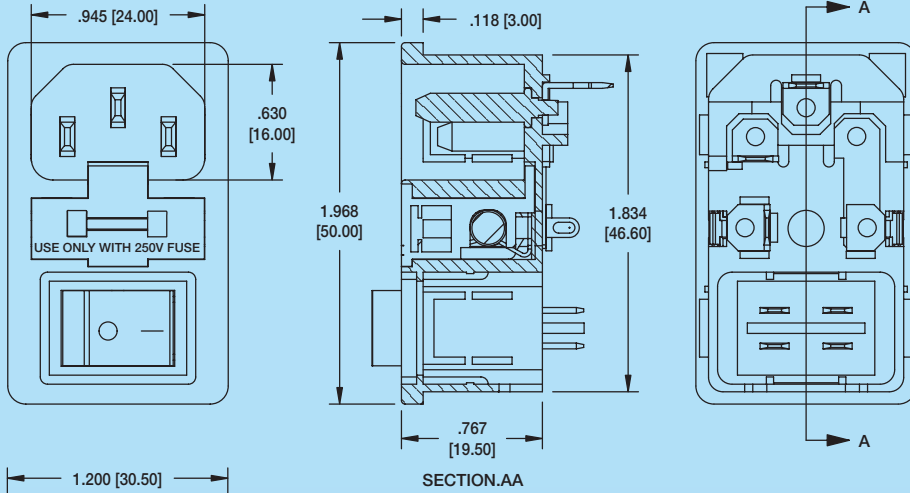


IEC-HS-1

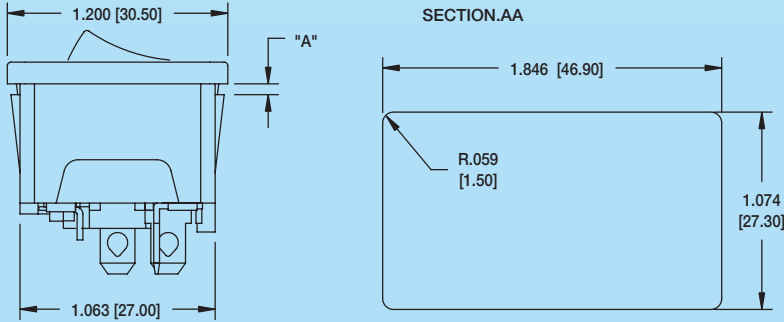
# AC INLETS & OUTLETS

## IEC 320 CONNECTORS IEC SERIES

### IEC-GS-1 FUSED INLET WITH SWITCH, SNAP IN PANEL MOUNT

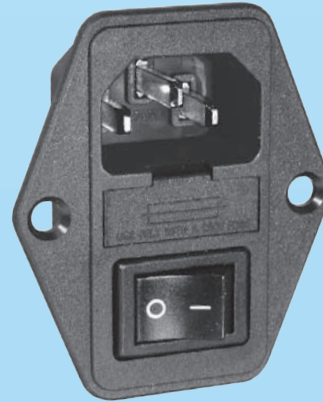


PART NUMBER	DIM "A"
IEC-GS-1-100	.039 [1.00]
IEC-GS-1-150	.059 [1.50]
IEC-GS-1-200	.079 [2.00]



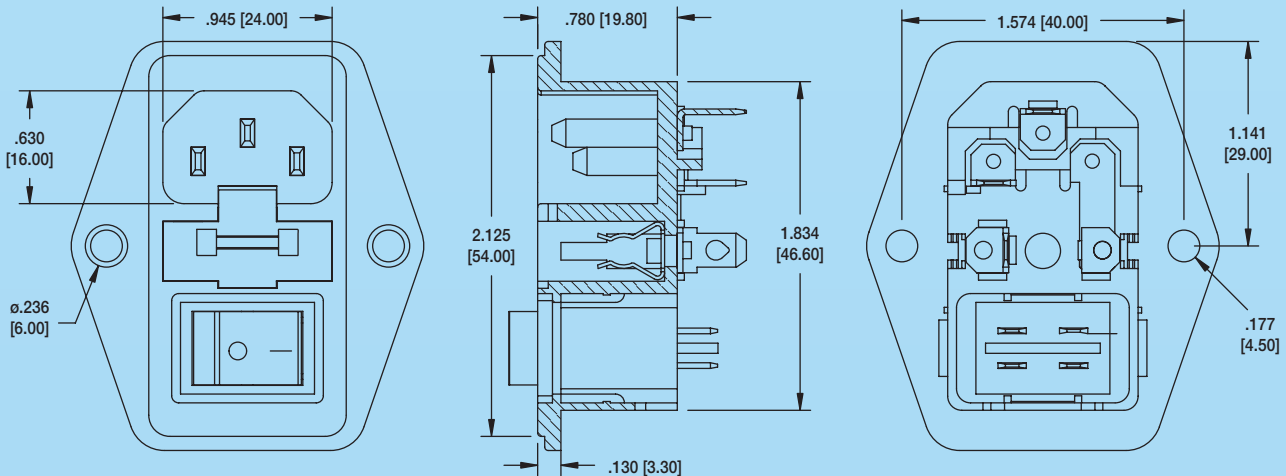
Recommended Panel Cut-Out

IEC-GS-1-100



IEC-FS-1

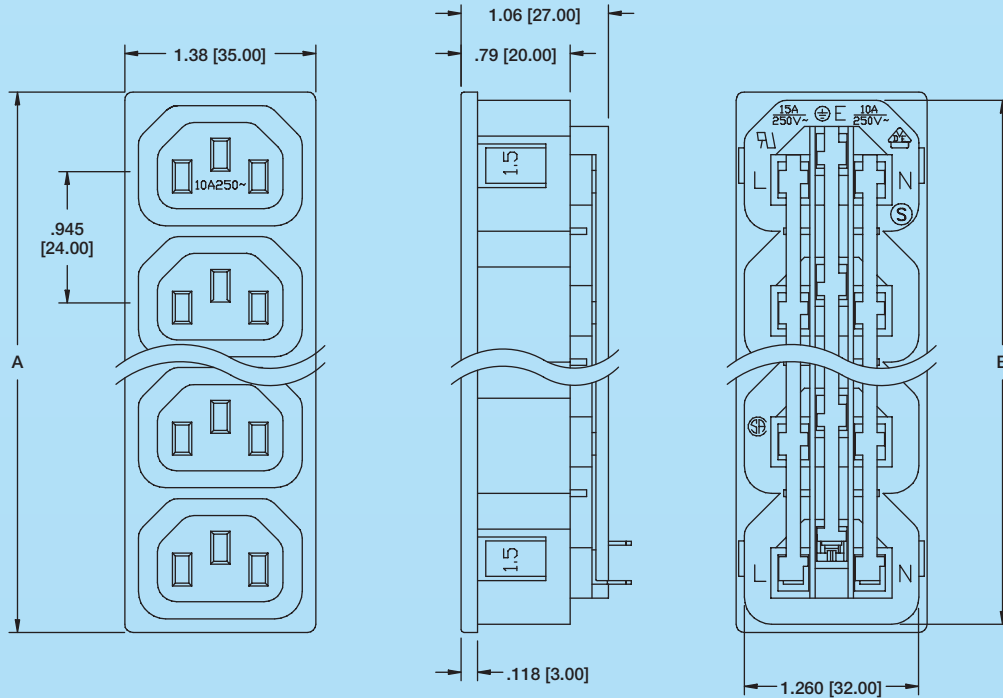
### IEC-FS-1 FUSED INLET WITH SWITCH, SCREW ON PANEL MOUNT



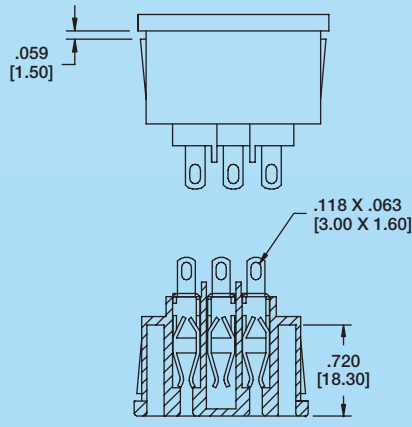
# AC INLETS & OUTLETS

## IEC 320 CONNECTORS IEC SERIES

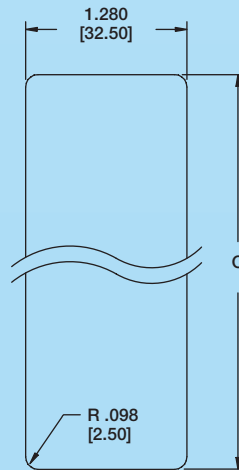
**IEC-D-S**  
STACKED OUTLETS WITH  
DEDICATED PANEL SNAPS



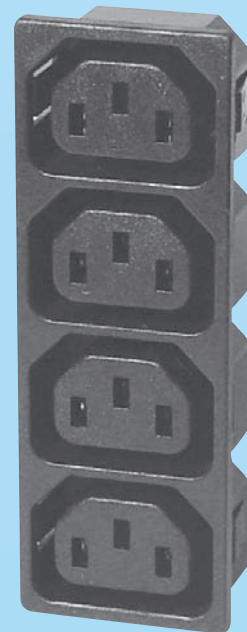
2 THRU 7 PORTS AVAILABLE



Cross Section



Recommended Panel Cut-Out



**IEC-D-S4-150**

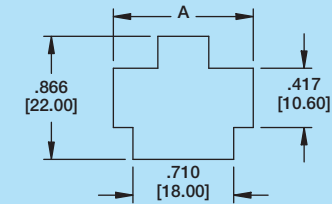
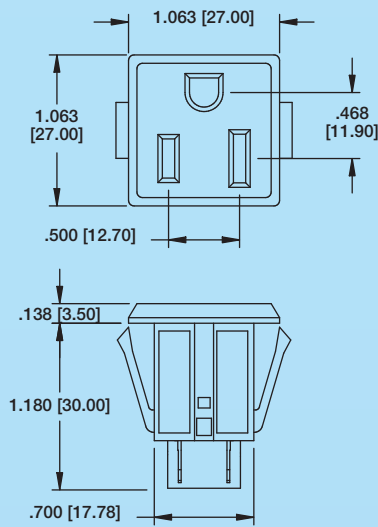
DIMENSIONS				
PART NUMBER	PORTS	A	B	C
IEC-D-S2-150	2	2.007 [51.00]	1.890 [48.00]	1.901 [48.30]
IEC-D-S3-150	3	2.953 [75.00]	2.835 [72.00]	2.846 [72.30]
IEC-D-S4-150	4	3.897 [99.00]	3.780 [96.00]	3.791 [96.30]
IEC-D-S5-150	5	4.842 [123.00]	4.724 [120.00]	4.736 [120.30]
IEC-D-S6-150	6	5.787 [147.00]	5.670 [144.00]	5.681 [144.30]
IEC-D-S7-150	7	6.732 [171.00]	6.614 [168.00]	6.626 [168.30]

\*PART NUMBERS SHOWN ARE FOR 1.5mm PANEL THICKNESS. CONSULT FACTORY FOR OTHER PANEL THICKNESSES REQUIREMENTS

# POWER OUTLET

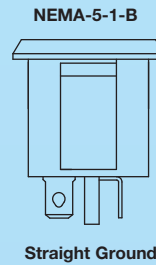
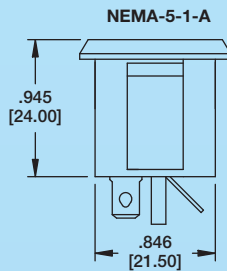
## NEMA RECEPTACLES IEC SERIES

### NEMA-5-1-A UNIVERSAL PANEL SNAP



PANEL THICKNESS	DIM. A
.031 [0.80]	.945 [24.00]
.039 [1.00]	.968 [24.60]
.047 [1.20]	.992 [25.20]
.063 [1.60]	1.031 [26.20]

Recommended Panel Cut-Out For  
1.50mm Panel Thickness

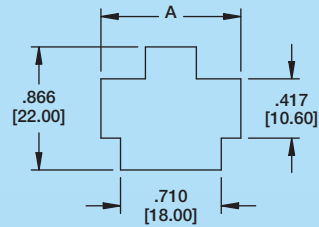
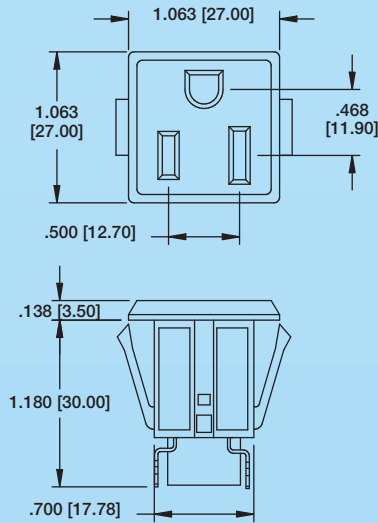


Straight Ground

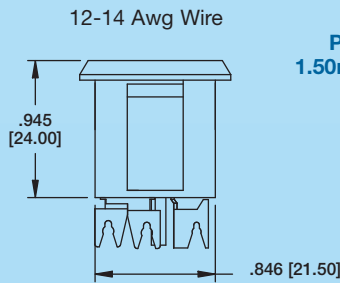


NEMA-5-1

### NEMA-5-2 UNIVERSAL PANEL SNAP

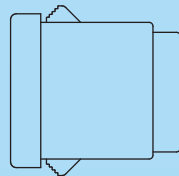
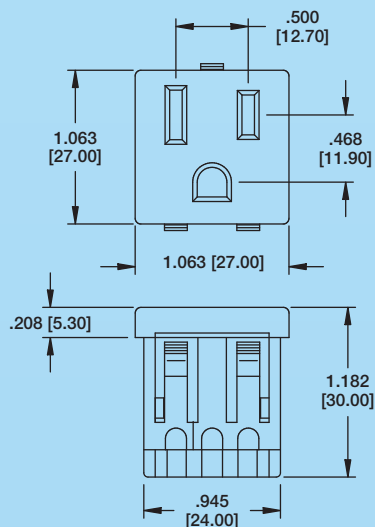


Recommended  
Panel Cut-Out For  
1.50mm Panel Thickness



NEMA-5-2

### NEMA-5-3 UNIVERSAL PANEL SNAP



Recommended Panel Cut-Out For  
Panel 0.8mm - 1.50mm



NEMA-5-3

# MINI AC OUTLETS

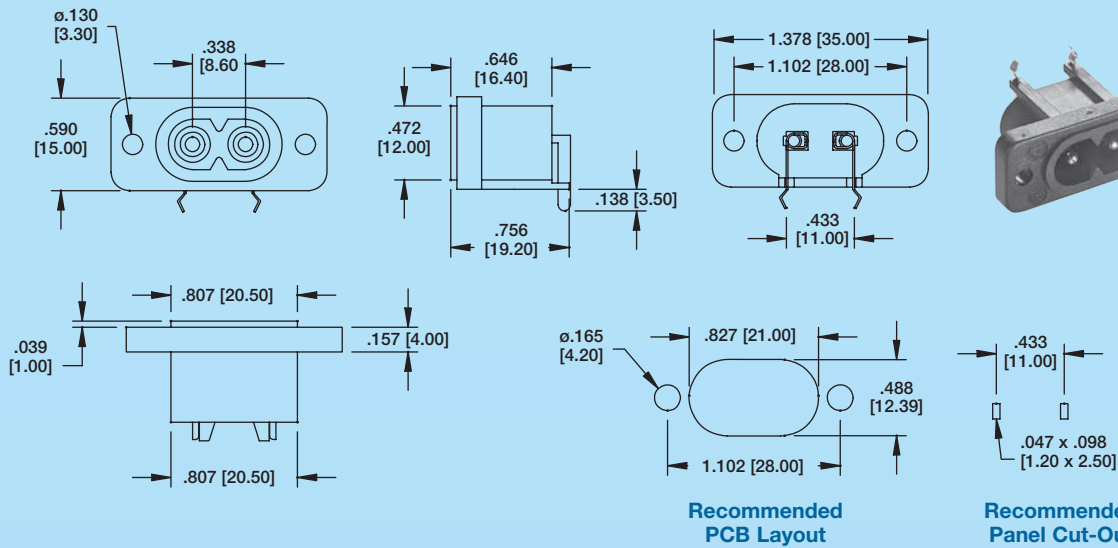
## MINI IEC CONNECTORS IEC SERIES

		<p><b>IEC-NA-4</b> <b>UNIVERSAL PANEL SNAP</b></p>
		<p><b>IEC-NB-4</b> <b>DEDICATED PANEL SNAP</b></p>
		<p><b>IEC-NB-A-4</b> <b>SLIDE ON PANEL</b></p>

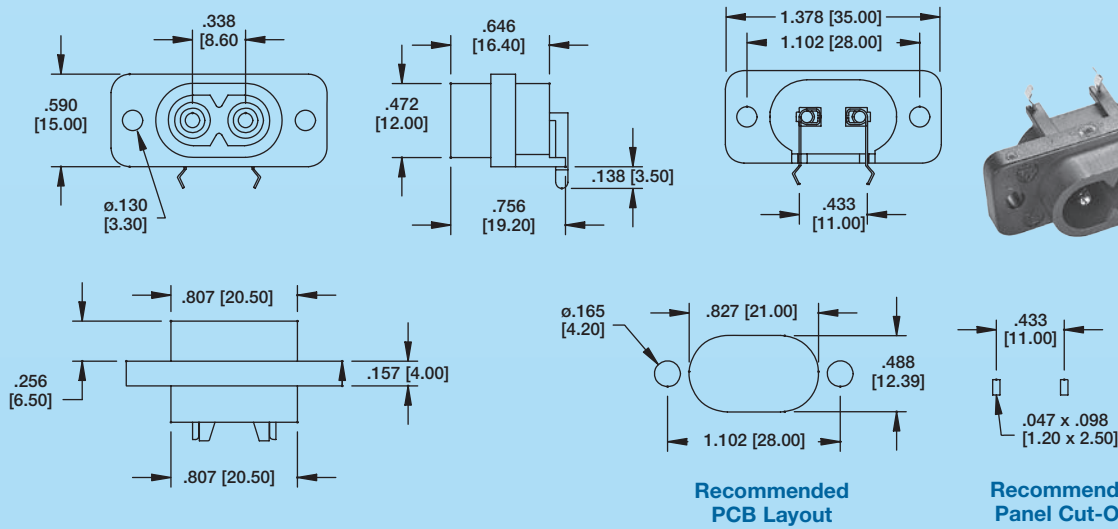
# MINI AC OUTLETS

## MINI IEC CONNECTORS IEC SERIES

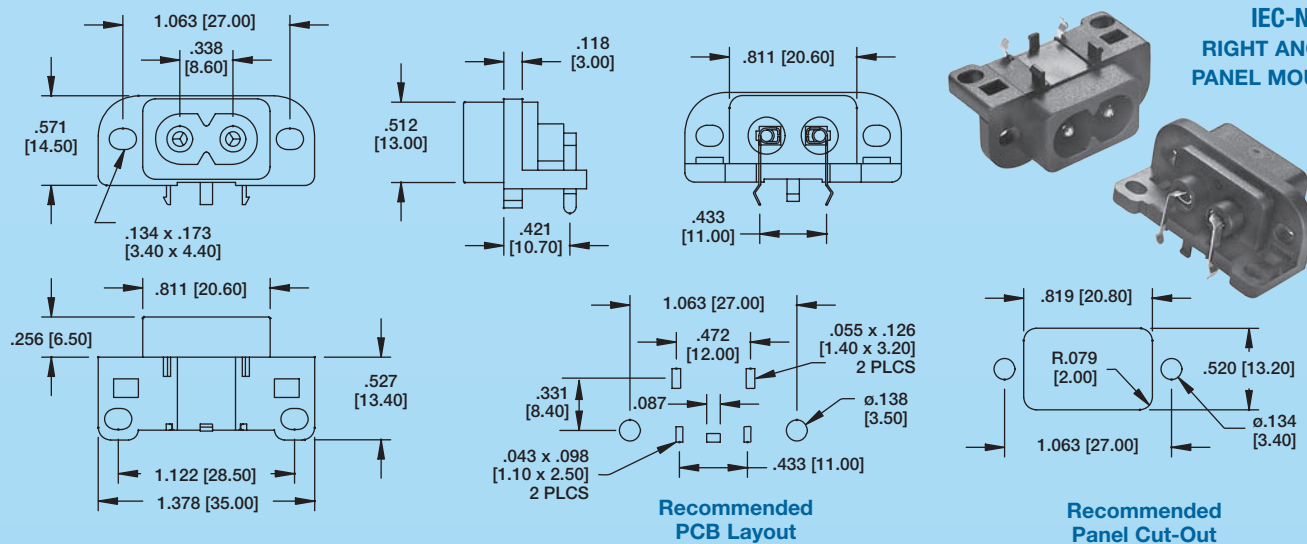
### IEC-NC-4 RIGHT ANGLE PANEL MOUNT



### IEC-NC-A-4 RIGHT ANGLE PANEL MOUNT



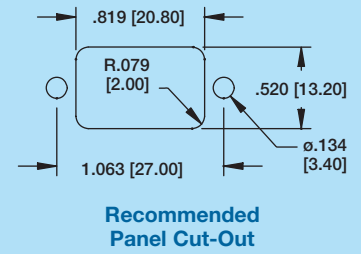
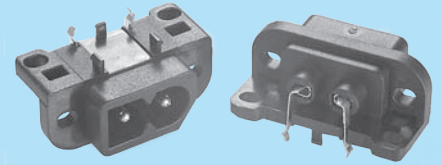
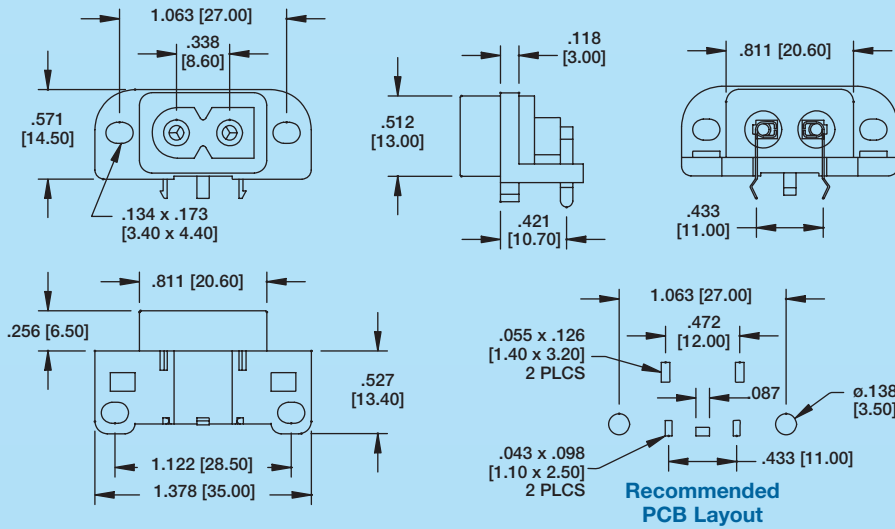
### IEC-ND-4 RIGHT ANGLE PANEL MOUNT



# MINI AC OUTLETS

## MINI IEC CONNECTORS IEC SERIES

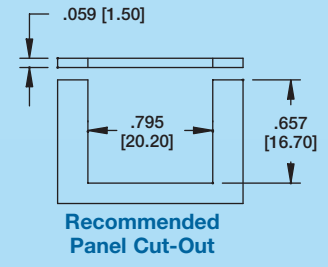
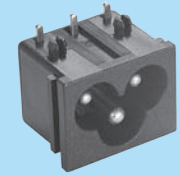
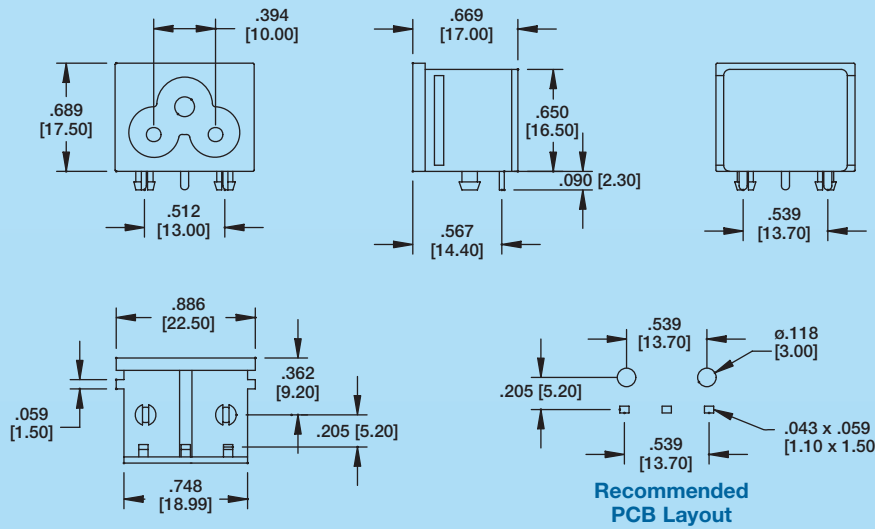
### IEC-NF-4 RIGHT ANGLE PANEL MOUNT



Recommended PCB Layout

Recommended Panel Cut-Out

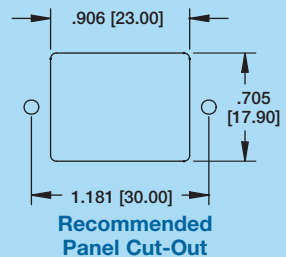
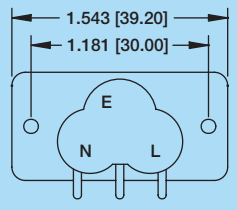
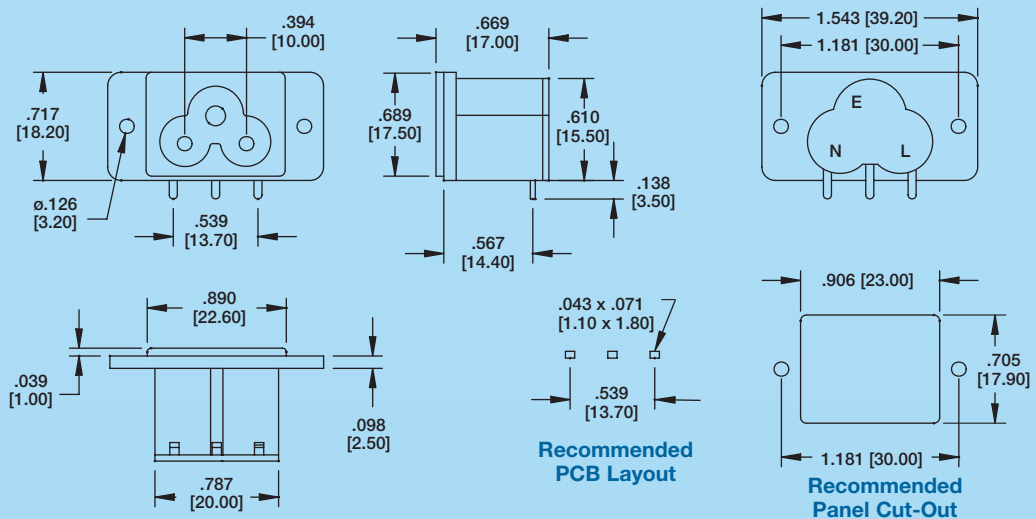
### IEC-NH-4 RIGHT ANGLE SLIDE ON PANEL



Recommended PCB Layout

Recommended Panel Cut-Out

### IEC-NH-A-4 RIGHT ANGLE SCREW ON PANEL MOUNT



Recommended PCB Layout

Recommended Panel Cut-Out



# CUSTOM POWER CONNECTOR SOLUTIONS

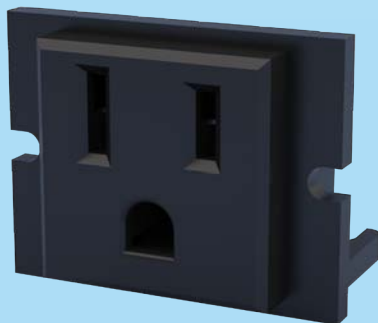
Adam Tech can provide custom power connector solutions from concept to production. Adam Tech utilizes over 30 years of experience to create high quality and reliable solutions to meet your application needs.

Send us your requirements and let our team of experienced design engineers provide solutions for you. We offer a 'complete capability' service which includes in house engineering, component manufacturing, assembly and technical sales support.

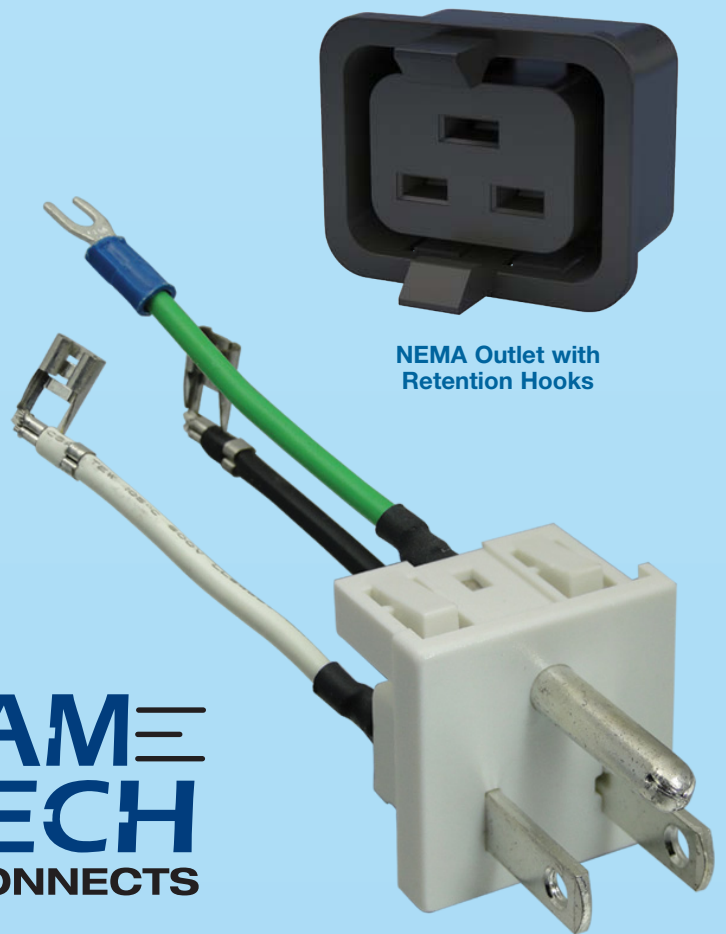
Refer to below case studies of some custom power connectors we've built for our customers.



Custom Panel Mount,  
Right Angle PCB Mount NEMA,  
Ganged



Custom Panel Mount,  
Right Angle PCB Mount NEMA,  
Single



NEMA Outlet with  
Retention Hooks

Custom Wired Power Plug

**ADAM**  
**TECH**  
INTERCONNECTS

info@adam-tech.com  
www.adam-tech.com

**Adam Tech • USA**  
909 Rahway Ave  
Union, NJ 07083  
Tel: 908.687.5000  
Fax: 908.687.5710  
Email: info@adam-tech.com  
www.adam-tech.com

**Adam Tech • TAIWAN**  
5F-17, No.14, Lane 609,  
Sec. 5, Chongsin Rd.  
New Taipei City, Taiwan (R.O.C.)  
Tel: 886-2 2999 8028  
Fax: 886-2 2999 8062  
Email: sales@adam-tech.com  
www.adam-tech.com.tw

**Adam Tech • CHINA**  
Fulai Road, Liuwa Lane  
Liaobu, Dongguan City,  
Guangdong Province, China  
Tel. 886-2 2999 8028  
Fax. 886-2 2999 8062  
Email: factory@adam-tech.com  
www.adam-tech.com.cn

